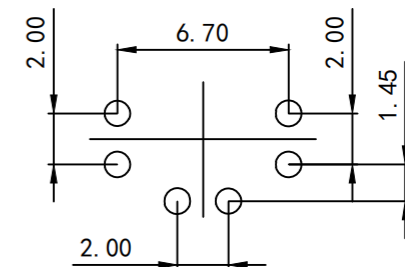
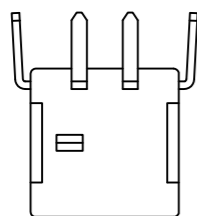
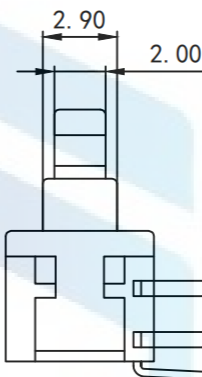
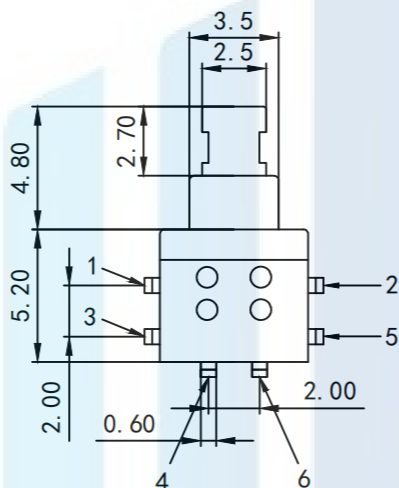
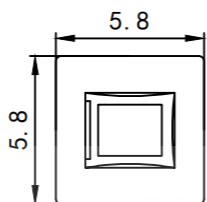
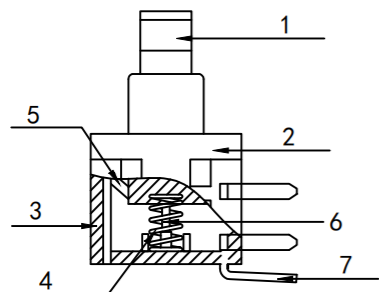
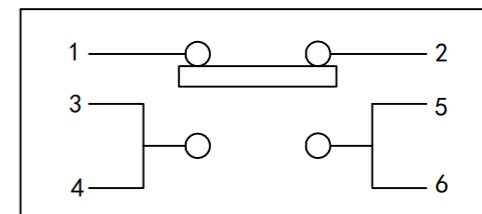


RoHS2.0
Compliant



PCB Layout (Pattern Side)



Circuit Diagram

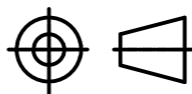
Specification :

1. Rating: DC30V 0.5A
2. Contact Resistance: 100mΩ Max
3. Insulation Resistance: 100MΩ Min
4. Withstand Voltage: AC250V (50-60Hz) For 1 Minute
5. Operation Force: 250±50gf
6. Life Test: 50,000 Cycles
7. Total Travel: 2.0±0.15 mm
8. Work Style: Self-Lock

TOLERANCE

X. XXX	±0.05
X. XX	±0.15
X. X	±0.20
X.	±0.30
ANGLE	±5.0°

PROTECTON



东莞市恒祺电子科技有限公司

Dongguan Hengqi Electronic Technology Co., Ltd

<https://www.hq-dz.com>

phone: 15812872448

TITLE:

按键开关
自(无)锁

PART NO: 5.8*5.8卧插6脚

DRAWING NO: 5.8*5.8*10

DRAWN:

CHECKED:

APPROVED:

DATE:

DATE:

DATE:

18-10-08

18-10-08

18-10-08

UNIT:
mm

SCALE:
FULL

SIZE:
A4