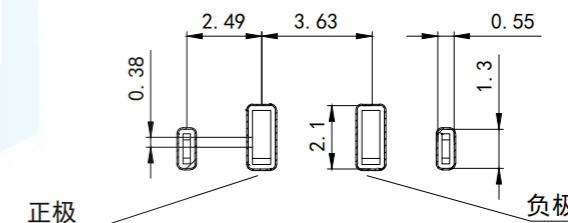
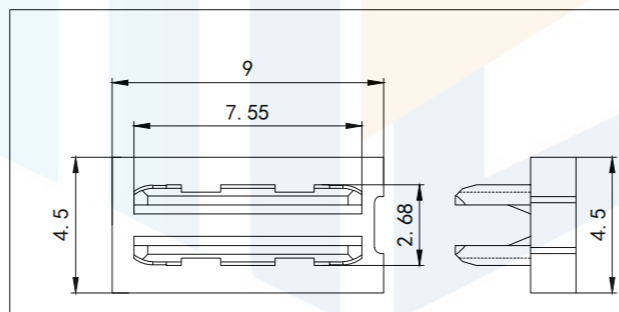
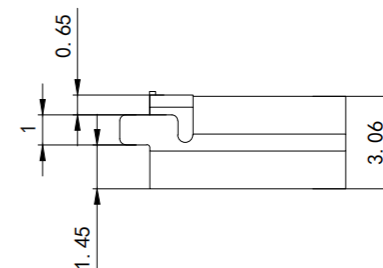
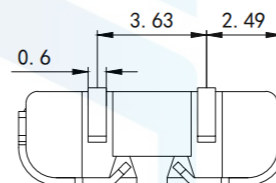
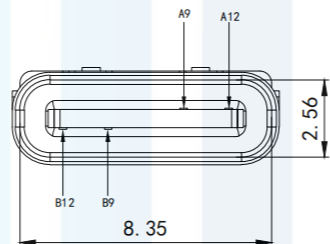
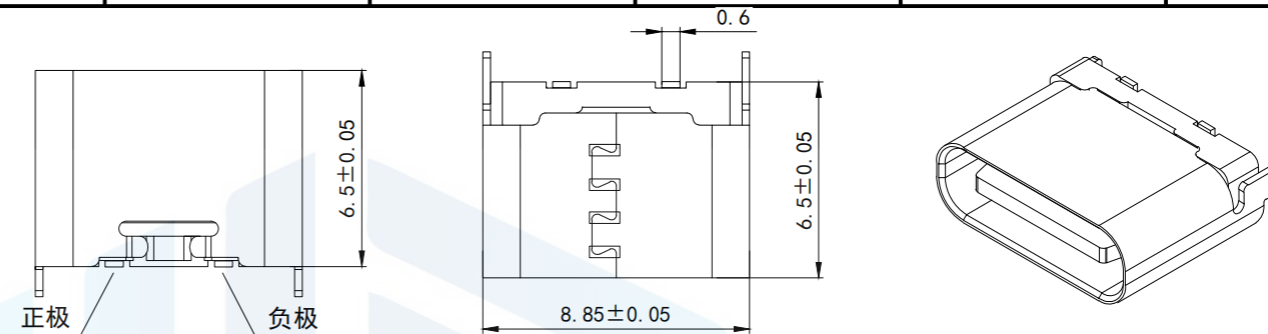


RoHS2.0  
Compliant



RECOMMEND P. C. B LAYOUT (COMPONENT SIDE)  
TOLERANCE FOR PCB LAYOUT IS  $\pm 0.05$

1 Material:

1.1 Adhesive core: LCP UL94 V-0  
1.2 terminal: C2680, T=0.2mm; Nickel base, gold plated  
1.3 shell: stainless steel 201-H with nickel plated finish

2. Electrical characteristics:

2.1. Contact area: contact resistance 40Ω Max, allowable 10mΩ variation, test conditions: 20mv, 100mA measurement

2.2. Contact current: 3A VBUS pin; 1.25A for GND

pins; The other pins are 0.25A.

2.3. Rated voltage: 5V

2.4. Withstand voltage: 100VAC

2.5. Insulation resistance: at least 100 megaohms

3. Mechanical properties:

3.1. Insertion force: 0.5-2.0Kg

3.2. Pull-out force: 0.6-2.04Kg

3.3. Number of plugging and unplugging: 5000 times

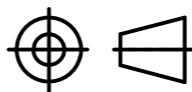
4. Working environment: -20° C to +85° C

5. Soldering heat resistance: the terminal is immersed in a tin bath at 250+5 ° C: it lasts 3-5S  $\pm 0.5$ Sec, and the tin area is more than 95%.

TOLERANCE

X. XXX	$\pm 0.05$
X. XX	$\pm 0.15$
X. X	$\pm 0.20$
X.	$\pm 0.30$
ANGLE	$\pm 5.0^\circ$

PROTECTON



东莞市恒祺电子科技有限公司

Dongguan Hengqi Electronic Technology Co., Ltd

<https://www.hq-dz.com>

phone:15812872448

TITLE:

TYPE C 2P立式贴片

PART NO:TYPE-C2P-LT1065

DRAWING NO:8.85\*6.5\*3.06

DRAWN:

CHECKED:

APPROVED:

DATE:

DATE:

DATE:

18-10-08

18-10-08

18-10-08

UNIT:  
mm

SCALE:  
FULL

SIZE:  
A4